



WHAT YOU NEED TO KNOW ABOUT

BUSINESS RECYCLING

Why recycle?

- **State law now requires all businesses that generate 4 or more cubic yards of waste weekly to recycle.**
- Recycling may provide opportunities for your business to save money.
- Recycling helps conserve resources and extends the life of California's landfills. It also helps create a healthy environment for our community and future generations.

How to get started

It's easy to recycle at your business.

- Make sure your business has arranged for recycling services (see below for more information).
- Use the list on the other side of this flyer to help employees learn what items can be recycled.
- Separate recyclable items from trash inside your business.
- Place your recyclable items in external recycling containers for collection.
- **Note:** Any business or individual may donate, sell and/or otherwise arrange for the pickup of recyclable materials.

Where to go for more information

Contact
Waste Management - Corning Disposal
Customer Service: 1-800-479-8101.
Monday - Friday • 8:00 a.m. – 5:00 p.m.
Website: northvalley.wm.com

Visit www.countyofglenn.net/dept/public-works for more information from Glenn County Public Works Solid Waste & Recycling.

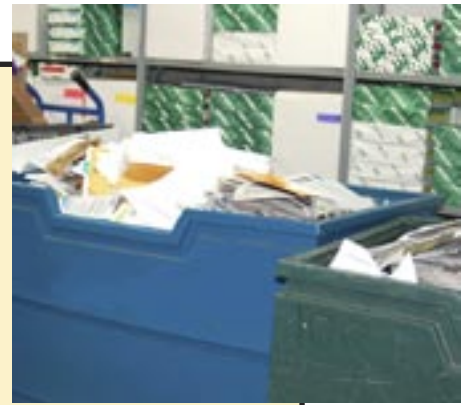
For additional general information about recycling and waste reduction, visit the California Department of Resources Recycling and Recovery (CalRecycle) at www.calrecycle.ca.gov.



Types of material to recycle



- Clean, dry paper
- Cardboard and chipboard
- Plastic and glass bottles and jars
- Metal and aluminum cans
- Metal containers and empty aerosol cans
- Plastic bags and dry cleaners bags, bundled



Don't put in recycling bin



- Broken glass
- Contaminated or wet paper
- Plastic hangers
- Rubber tires
- Hazardous waste — paint, batteries, antifreeze, pesticides, cleaning products, appliances, cell phones, TVs, computer monitors
- Do not place rubber tires or hazardous waste in recycling bins. For information on proper disposal or recycling of these materials, call (530) 934-6530.



County of Glenn Public Works Agency
Mailing Address: P.O. Box 1070
Physical Address: 777 N. Colusa Street
Willows, CA 95988
530.934.6530 Fax 530.934.6533
www.countyofglenn.net