



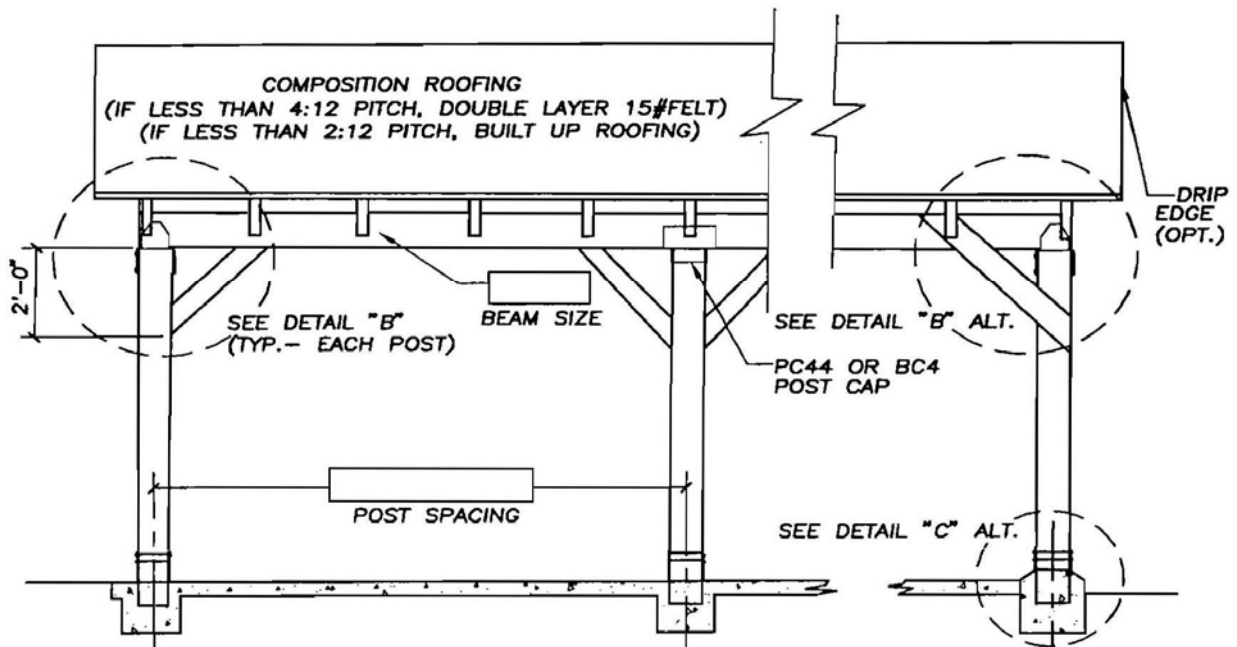
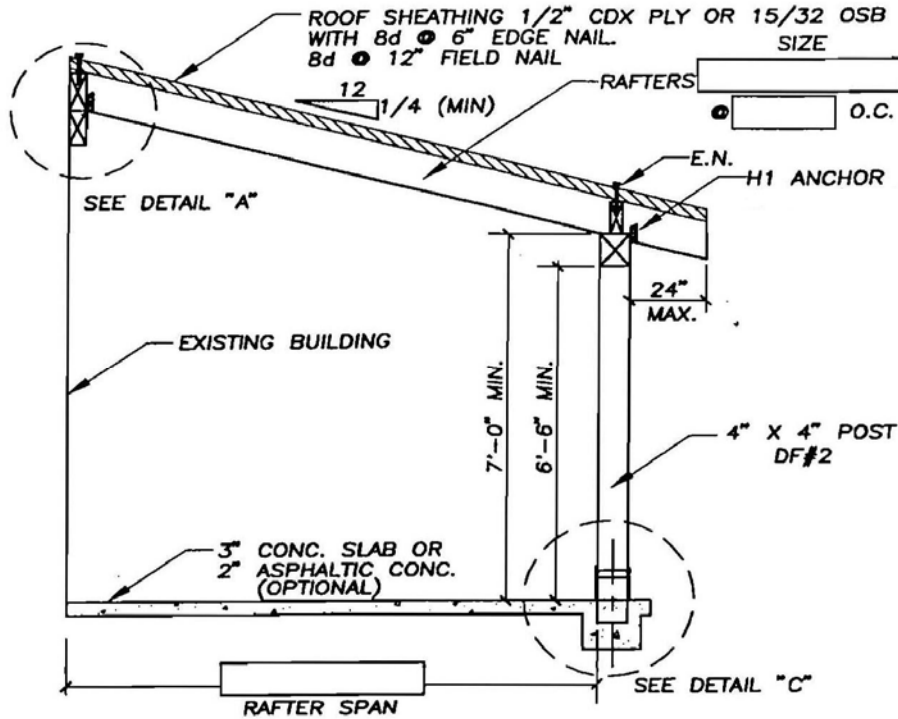
# Residential Patio Covers

City of Willows Building & Planning Department  
201 N Lassen Street, Willows CA 95988  
Ph:(530)934-7041 EXT 100

Handout

Page 1 of 4

This handout is intended to cover simple span patio covers in areas with a roof snow load of 30 pounds or less. Spans are limited to 12' and covers are to be no more than 10' in height.





# Residential Patio Covers

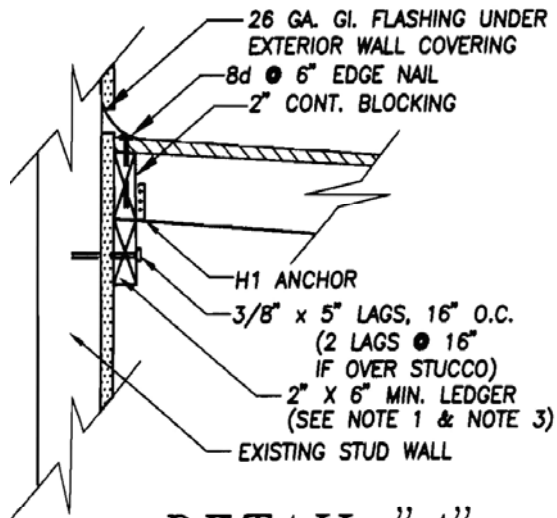
City of Willows Building & Planning  
 Department  
 201 N Lassen Street, Willows CA 95988  
 Ph:(530)934-7041 EXT 100

Handout

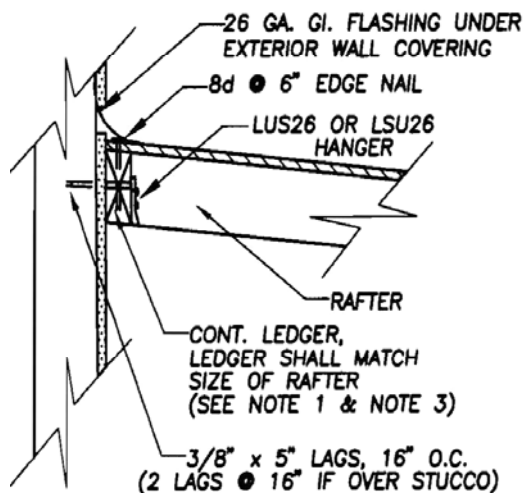
Page 2 of 4

## NOTES

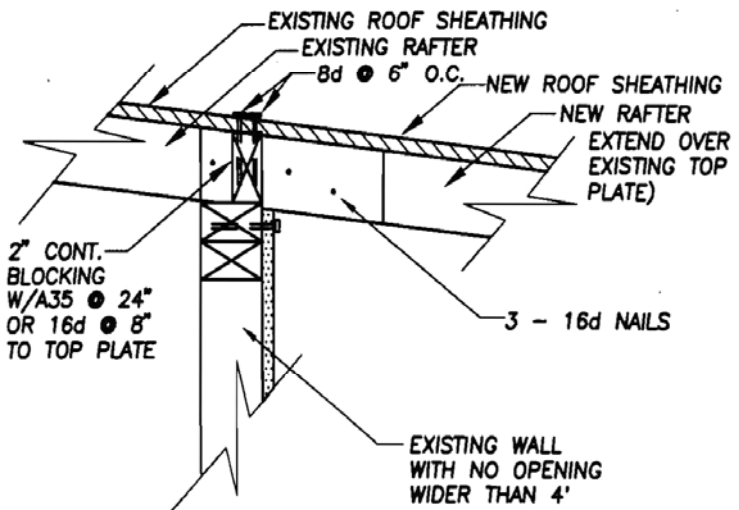
- LEDGERS OVER DOORS & WINDOWS SHALL BE CONTINUOUS AND EXTEND 4' PAST OPENING. USE 2" X 8" MIN. LEDGER OVER 6' OPENING WITH (6) 3/8" X 5" LAG BOLTS TO STUDS, EACH SIDE OF OPENING (2 PER STUD).
- IF RAFTERS ARE TO BE SUPPORTED BY EXISTING EAVE OVERHAND, ENGINEERING REQUIRED.
- DO NOT CUT EXISTING STRUCTURAL SIDING. (INSULATING FOAM IS NOT STRUCTURAL SIDING. REMOVE FOAM BEHIND LEDGER.)
- PRE-DRILL LEAD HOLES FOR LAG BOLTS:  
 1/4" HOLE FOR THREADED PORTION,  
 3/8" HOLE FOR SHANK.
- PROVIDE PLOT PLAN SHOWING THE LOCATION OF ALL EXISTING BUILDINGS ON LOT WITH DIMENSIONS TO LOT LINES AND BETWEEN BUILDINGS.
- CONNECTORS MUST BE APPROVED. INSTALL NAILS OR BOLTS IN CONNECTORS IN ACCORDANCE WITH MANUFACTURERS INSTRUCTIONS.
- PROVIDE SMOKE DETECTORS AS REQUIRED



DETAIL "A"



DETAIL "A"  
ALTERNATE



DETAIL "A"  
ALTERNATE

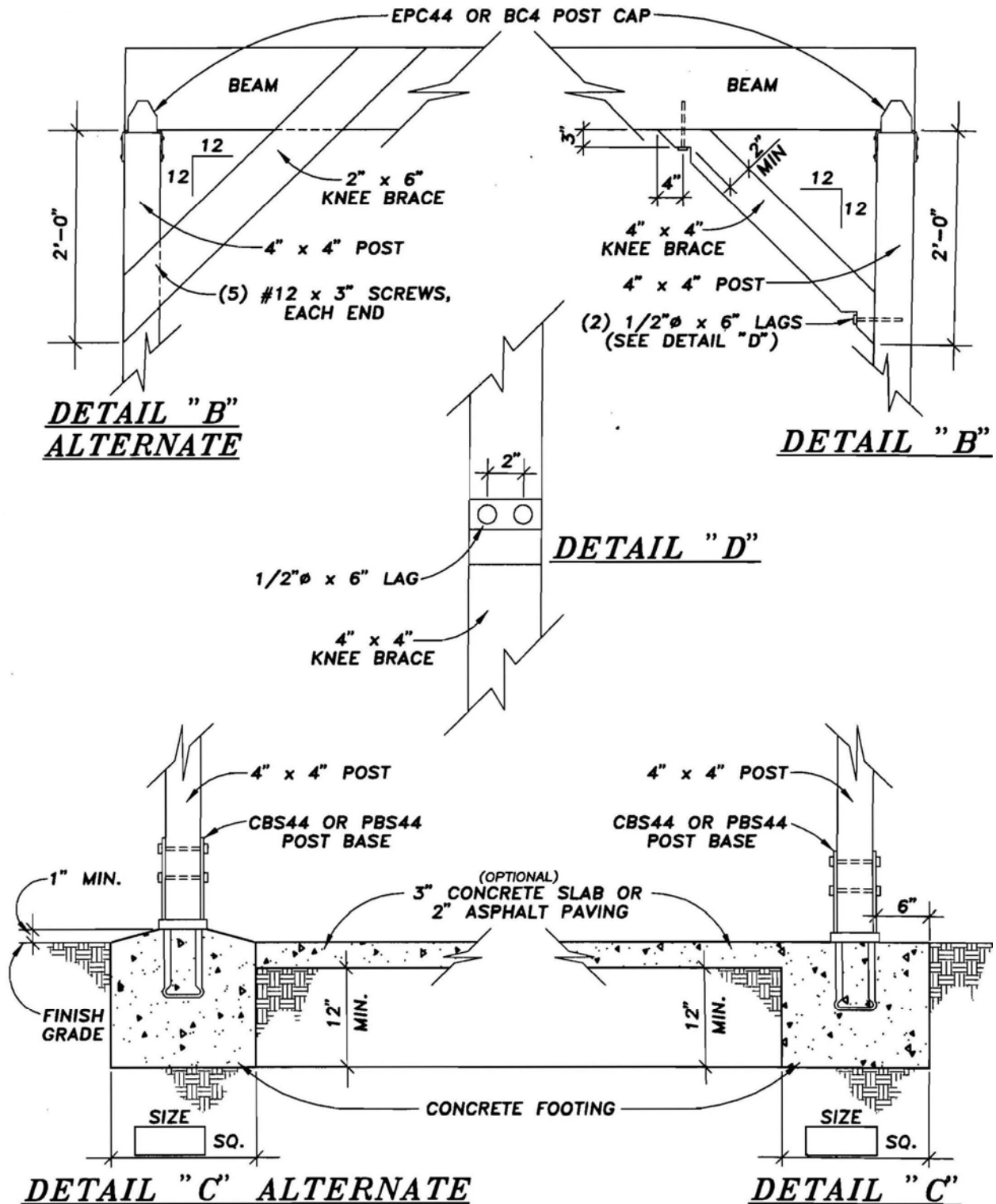


# Residential Patio Covers

City of Willows Building & Planning Department  
201 N Lassen Street, Willows CA 95988  
Ph:(530)934-7041 EXT 100

Handout

Page 3 of 4





# Residential Patio Covers

City of Willows Building & Planning Department  
 201 N Lassen Street, Willows CA 95988  
 Ph:(530)934-7041 EXT 100

Handout

Page 4 of 4

**Table A – Minimum Square Footing Size in inches – 30 pound or less Snow Loads**

<u>Post Spacing</u>	<i>Rafter Span in Feet</i>			
	<b>6</b>	<b>8</b>	<b>10</b>	<b>12</b>
<b>4</b>	12	12	12	12
<b>6</b>	12	12	12	15
<b>8</b>	12	15	15	15
<b>10</b>	15	15	18	18
<b>12</b>	15	18	18	20

**Table B – Minimum Rafter Size - #2 Douglas Fir – 30 pound or less Snow Loads**

<u>Rafter Span in feet</u>	<i>Rafter Spacing Center to Center in inches</i>		
	<b>12</b>	<b>16</b>	<b>24</b>
<b>6</b>	2 x 4	2 x 4	2 x 4
<b>7</b>	2 x 4	2 x 4	2 x 4
<b>8</b>	2 x 4	2 x 6	2 x 6
<b>9</b>	2 x 6	2 x 6	2 x 6
<b>10</b>	2 x 6	2 x 6	2 x 8
<b>11</b>	2 x 6	2 x 6	2 x 8
<b>12</b>	2 x 6	2 x 6	2 x 8

**Table C - Minimum Beam Sizes - #2 Douglas Fir - – 30 pound or less Snow Loads**

<u>Post Spacing in feet</u>	<i>Rafter Span in Feet</i>			
	<b>6</b>	<b>8</b>	<b>10</b>	<b>12</b>
<b>4</b>	4 x 4	4 x 4	4 x 6	4 x 6
<b>6</b>	4 x 6	4 x 6	4 x 6	4 x 6
<b>8</b>	4 x 6	4 x 6	4 x 8	4 x 8
<b>10</b>	4 x 8	4 x 8	4 x 10	4 x 10
<b>12</b>	4 x 8	4 x 10	4 x 12	4 x 12